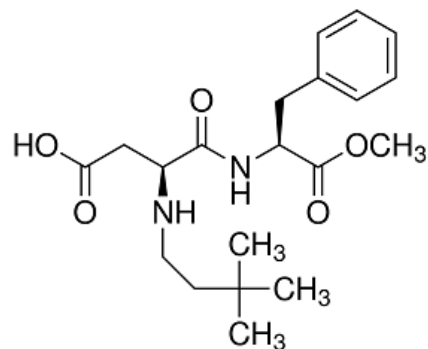


M/S. BIMAL PHARMA PVT. LTD . MUMBAI (INDIA)	FINISHED PRODUCT INFORMATIONS
QUALITY CONTROL AND ASSURANCE	PRODUCT : NEOTAME, FCC X (FOOD GRADE)
MSDS No. BPPL 169 (Available on Request)	SPECIFICATION NO. FP- 169 (Enclosed)

1. **NOMENCLATURE** : N-[N-(3,3-Dimethylbutyl)-L- α -aspartyl]-L-phenylalanine 1-methyl ester.
2. **CAS NO.** : 165450-17-9
3. **HSN CODE** : 29224290 / 29224990
4. **EMPIRICAL FORMULA** : $C_{20}H_{30}N_2O_5$
5. **MOL. WT.** : 378.46

6. **STRUCTURAL FORMULA** :



7. **DESCRIPTION** :
- : White crystalline powder.
 - : Strong sweet taste.
 - : Sparingly soluble in Water.
 - : Very soluble in Alcohol
8. **APPLICATIONS** :
- : It is 7000 times to 13000 times sweeter than Sugar.
 - : Used in preparation of Carbonated soft Drinks and Beverages.
 - : Used in Baked Foods and Dairy Products.
 - : Confectionery.
 - : Ice-Creams ; Jams ; Dairy Products , Chewing Gum, etc.

M/S. BIMAL PHARMA PVT. LTD . MUMBAI (INDIA)	FINISHED PRODUCT INFORMATIONS
QUALITY CONTROL AND ASSURANCE	PRODUCT : NEOTAME, FCC X (FOOD GRADE)
MSDS No. BPPL 169 (Available on Request)	SPECIFICATION NO. FP- 169 (Enclosed)

1. **DESCRIPTION** : A White Crystalline Powder .
2. **SOLUBILITY** : Sparingly soluble in Water.
: Very soluble in Alcohol.
3. **IDENTIFICATION** : Conforms to standard as per USP / EP / FCC.
4. **SPECIFIC ROTATION** : Bet. - 43.4° to - 40.0° on Anhy. Basis.
(At 20°C of 0.5% Sol. in water)
5. **WATER CONTENT** : Max. 5.0%
(BY KF)
6. **pH** : 5.0 to 7.0
(0.5% in Water.)
7. **RESIDUE ON IGNITION** : Max. 0.2%
(Sulphated Ash)
8. **LEAD** : Max. 0.0001% (1 ppm)
9. **RELATED SUBSTANCES** : Passes the Test as per USP and FCC.
Compound A : NMT 1.50 %
Other Related Substances : NMT 2.00 %
10. **RESIDUAL SOLVENTS** : Meets requirements as per USP
11. **ASSAY** : Bet. 97.0 % to 102.0%
(Calculated on Anhy. Basis)

M/S. BIMAL PHARMA PVT. LTD . MUMBAI (INDIA)	FINISHED PRODUCT INFORMATIONS
QUALITY CONTROL AND ASSURANCE	PRODUCT : NEOTAME, FCC X (FOOD GRADE)
MSDS No. BPPL 169 (Available on Request)	SPECIFICATION NO. FP- 169 (Enclosed)

- 12. TOTAL AEROBIC BACTERIA** : Less Than 250 cfu / gms
- 13. COLIFORM** : Less Than 10 mpn / gms
- 14. FUNGI** : Less Than 100 cfu / gms
- 15. PACKING** : 10 Kgs. Fibre drums with double PE liners.
: 1 Kg. packing, Aluminium Foil Bag in original intact packing.
- 16. STORAGE** : Preserve in a Cool and Dry Place.

REGULATION :

- 1. US FDA found Neotame SAFE.
It approved Neotame as General purpose sweetener.**
- 2. In India, FSSAI permits its use in Beverages & Soft Drinks concentrates.**

CHARACTERISTICS:

- 1. It is used Globally in 2000 + products.**
- 2. Neotame Taste is sweet & clean taste and no bitter taste.**
- 3. Neotame sweetness cost is less than Sodium Saccharin cost.**